

I'M DELIGHTED TO HAVE THE OPPORTUNITY TO EXHIBIT SOME OF MY FAVORITE WORKS THAT I CREATED DURING 2023, ALONGSIDE TWO INCREDIBLY TALENTED ARTISTS WHO ALSO LIVE WITH MULTIPLE SCLEROSIS.

THOUGH MS IMPACTS AND MANIFESTS ITSELF THROUGH OUR LIVES, ART, AND CREATIVE PRACTICES IN DIFFERENT WAYS, I HOPE THAT VIEWERS ARE LEFT WITH A UNIFIED SENSE OF HOPE AND RESILIANCE.



OPENS TUE | 2/6 | 5-8 PM  
WALTERS CULTURAL ARTS CENTER

**CYCLES** LINDSEY HOLCOMB  
STEPHANIE ANDERSON  
KATHARINE T. JACOBS

*'PEOPLE SPEAK OF HOPE AS IF IT IS THIS DELICATE, EPHEMERAL THING MADE OUT OF WHISPERS AND SPIDER'S WEBS. HOPE HAS DIRT ON HER FACE, BLOOD ON HER KNUCKLES, THE GRIT OF COBBLESTONES IN HER HAIR, AND JUST SPAT OUT A TOOTH AS SHE RISES FOR ANOTHER GO.'*

BISHOP KYM LUCAS

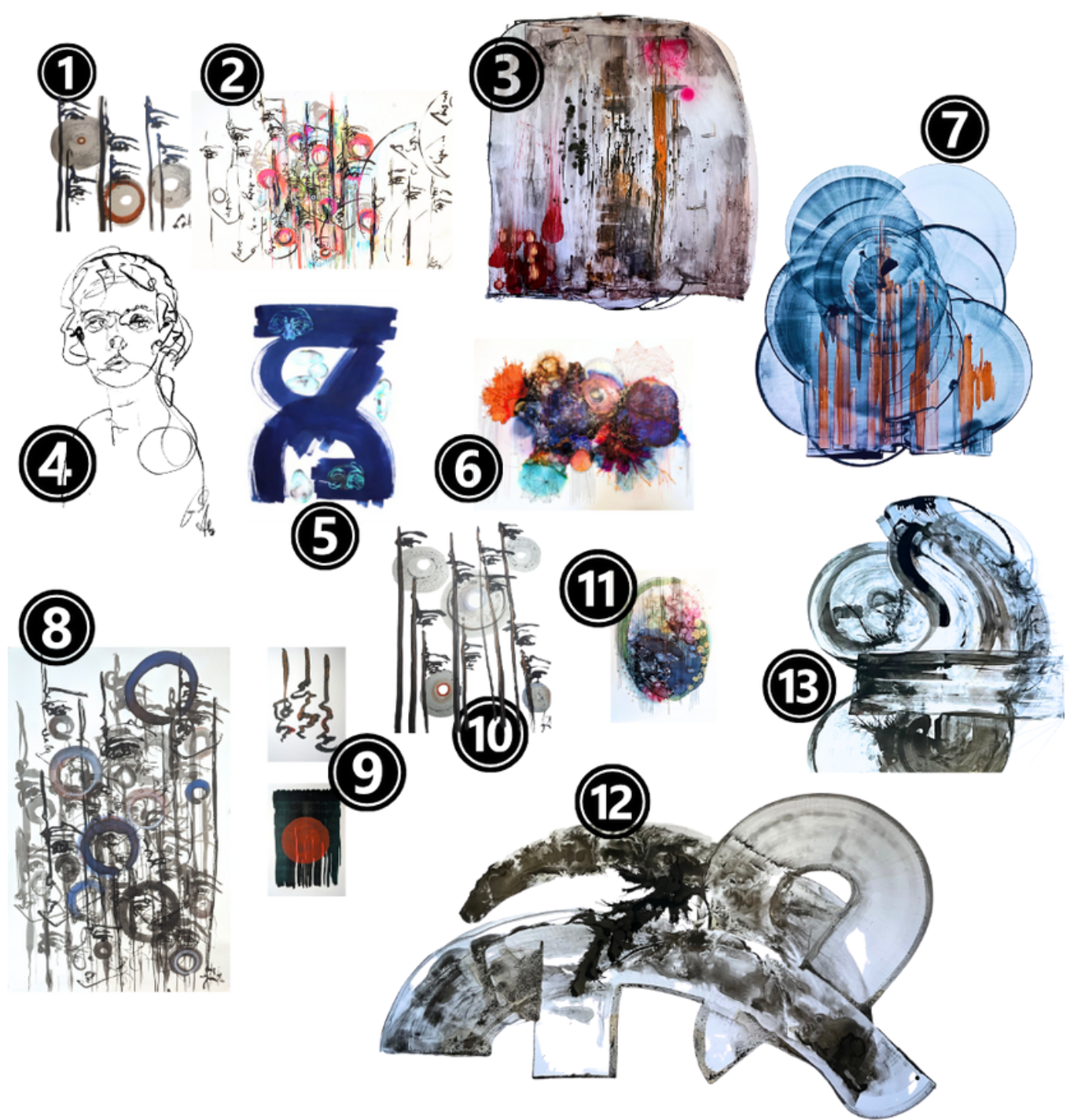
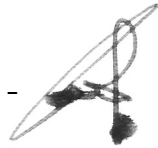
# CYCLES

This collection, created throughout 2023, is heavily influenced by my Japanese heritage, chronic illness, and placemaking through artist-made natural inks.

During the Feb - Mar Hillsboro exhibit, most of my artwork will be publicly marked NFS (not for sale), to build my future spring gallery and ArtLifting collections.

Works #1, #9 and #10 will be available during the exhibit. However, please contact me if you are interested in acquiring work from this exhibit and I can facilitate arrangements with the Walters Cultural Arts Center.

abundant gratitude -



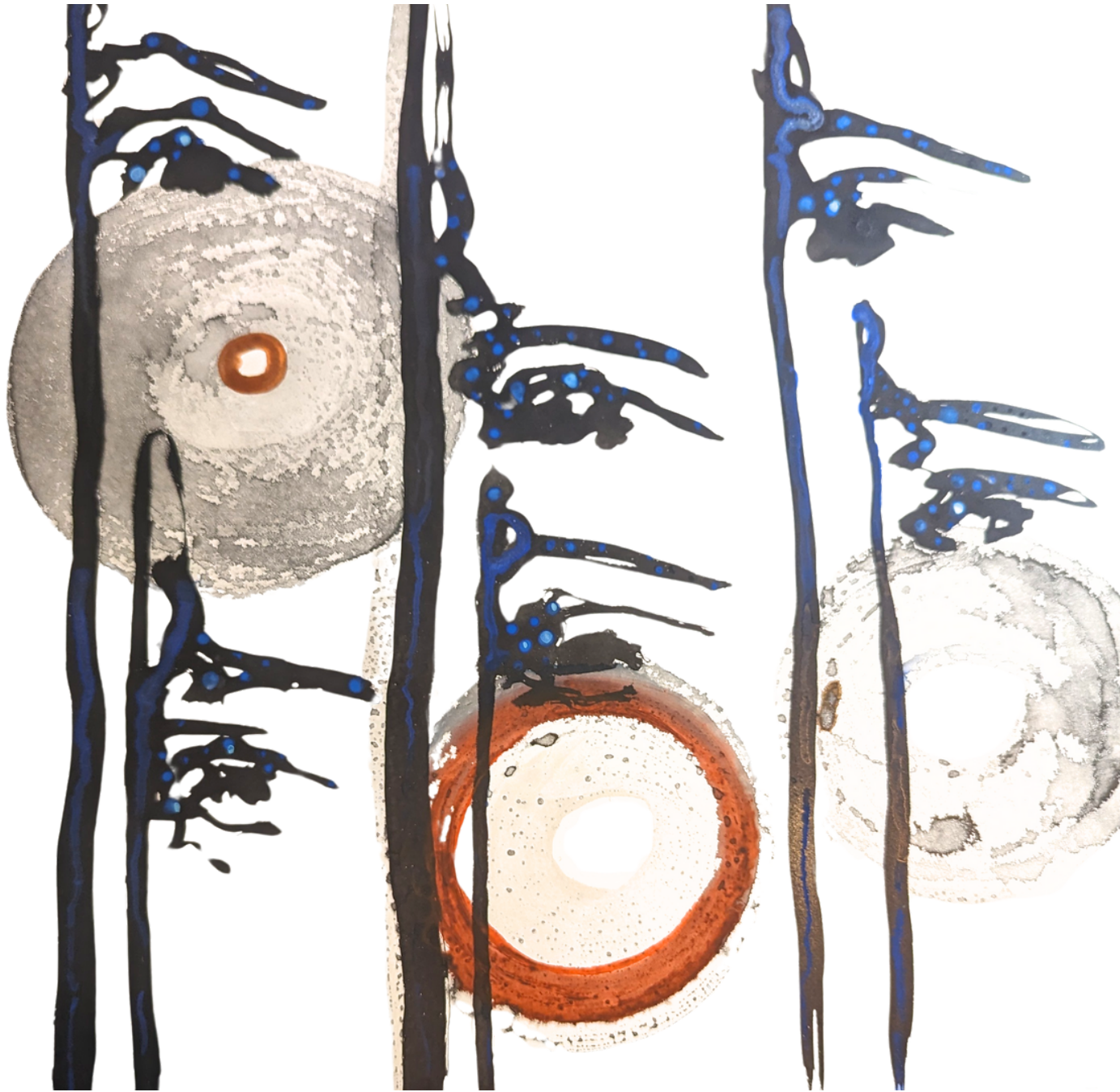
# COLLECTOR'S GUIDE

1 - eyes   persimmon cheek	12" x 12"	sumi, caran d'ache neopastel aquarelle on panel	\$450
2 - audience   opera pink	44" x 30"	sumi, gouache, pastel on Rives BFK	\$6000
3 - pain   burgundy & neon	36" x 35"	artist-made ink, sumi, alcohol ink and spray paint on Yupo	\$5000
4 - Figures II	17" x 20"	digital drawing print	NFS*
5 - The Ancients: Seirei II	27" x 34"	cyanotype, artist-made ink on Rives BFK	\$3200**
6 - Ink Nebula	34" x 28"	alcohol ink and thread on Yupo	\$2600
7 - kaonashi   persimmon	32" x 34"	artist-made ink on Yupo	\$3600
8 - audience   indigo	26" x 40"	sumi, pastel and matte medium on Rives BFK	\$3200
9 - whispers   noren	8" x 16"	sumi, caran d'ache neopastel aquarelle and acrylic on cotton	\$250
10 - eyes   indigo cheek	24" x 18"	sumi, caran d'ache neopastel aquarelle on panel	\$850
11 - Artists's MRI V	17" x 20"	alcohol ink and thread on Yupo	\$550
12 - ikebana   sumi	36" x 54"	sumi, hojicha on Yupo	\$8500
13 - comfort   marcy's garden	38" x 36"	sumi, hojicha and thread on Yupo	\$5000

\*image and prints available through my ArtLifting collection only

\*\*prints available exclusively through my ArtLifting collection

# EYES | PERSIMMON CHEEK



## "FRUIT OF THE GODS"

A persimmon symbolizes transformation as a young fruit is sharp and bitter (ignorance) sweetening as it matures and is fully ripe.

## ABOUT

Painted with closed eyes, these are as familiar to my hand as a signature. My practice of painting or drawing continuous-line eyes and faces is to embrace my worsening vision due to optic neuritis, a common symptom of multiple sclerosis. Losing vision as an artist was terrifying to me until I began to feel delighted by this new outlook and technique; each work is a trust-fall and embellished for with water-soluble wax pastel for texture and whimsy.

12" x 12" sumi and caran d'ache neopastel aquarelle on cradled panel

S450

# AUDIENCE | OPERA PINK



## ABOUT

Painted following a car accident, and completed throughout recovery. This work is my imagining of the simple quiet of our birth, through the cacophony of adulthood, into the golden years. The faces are from our past, present, and future - forgotten or important, watchful or absent.

The faces were painted blindly in sumi, and heavily post-embellished in washes of pastel with heady drips of opera pink gouache.

44" x 30" sumi, gouache and pastel on Rives BFK paper  
\$6000

# PAIN | BURGUNDY & NEON



## ABOUT

### PAIN

More faithful  
than lover or husband  
it cleaves to you,  
calling itself by your name  
as if there had been a ceremony.

At night you turn and turn  
searching for the one  
bearable position,  
but though you may finally sleep  
it awakens ahead of you.

How heavy it is,  
displacing with its volume  
your very breath.  
Before, you seemed to weigh nothing,  
your arms might have been wings.

Now each finger adds its measure;  
you are pulled down by the weight  
of your own hair.  
And if your life should disappear ahead of you  
you would not run after it.

by Linda Pastan | Poetry Magazine

36" x 35" artist-made ink, sumi, alcohol ink and spray paint on Yupo paper  
\$5000

# FIGURES II



## ABOUT

My original passion was oil portraiture, but I found myself fighting with the medium during the years up until diagnosis. My love for figure drawing has been refreshed through continuous-line digital work; created from memory or by observation.

17" x 20" digital print

\*NFS: prints available exclusively through my ArtLifting collection; reproduced for exhibition purposes only

# THE ANCIENTS: SEIREI II



## MORE FROM THIS COLLECTION

The Portland Art Museum Rental Sales Gallery currently has available two additional works from my Seirei collection (#3 & #5):

SEIREI  
FAMILY

*Artist's signature*



#1, #2 available in my private collection

## ABOUT

An exploration of Japanese myth in cyanotype and artist-made ink; the word seirei (精霊) means a supernatural being that is the origin of all things and forms, liberated from the body, found in plants, animals, persons, and inanimate objects. Created from kirigami works (hand-cut paper masks) and UV-printed onto painterly cyanotype, embellished with artist-made ink for a sense of placemaking.

27" x 34" cyanotype, artist-made ink on Rives BFK paper  
S3200

\*prints available exclusively through my ArtLifting collection

# INK NEBULA



I still can't say what life is for, but it can't be to pretend  
that every part of it is knowable, or that what appears to be  
to the naked eye or in the middle ground or documented on paper  
approximates a person any better than a daisy does our sun.

When at a loss for what I am, I know I must be feeling it  
deep in the layers, where a turbulence gives rise to clouds  
so massive they collapse in a bliss of gravity, condensing into this  
music I can daisy into morning as it daisies me into morning.

excerpt from "Habitable Nebula" by Timothy Donnelly

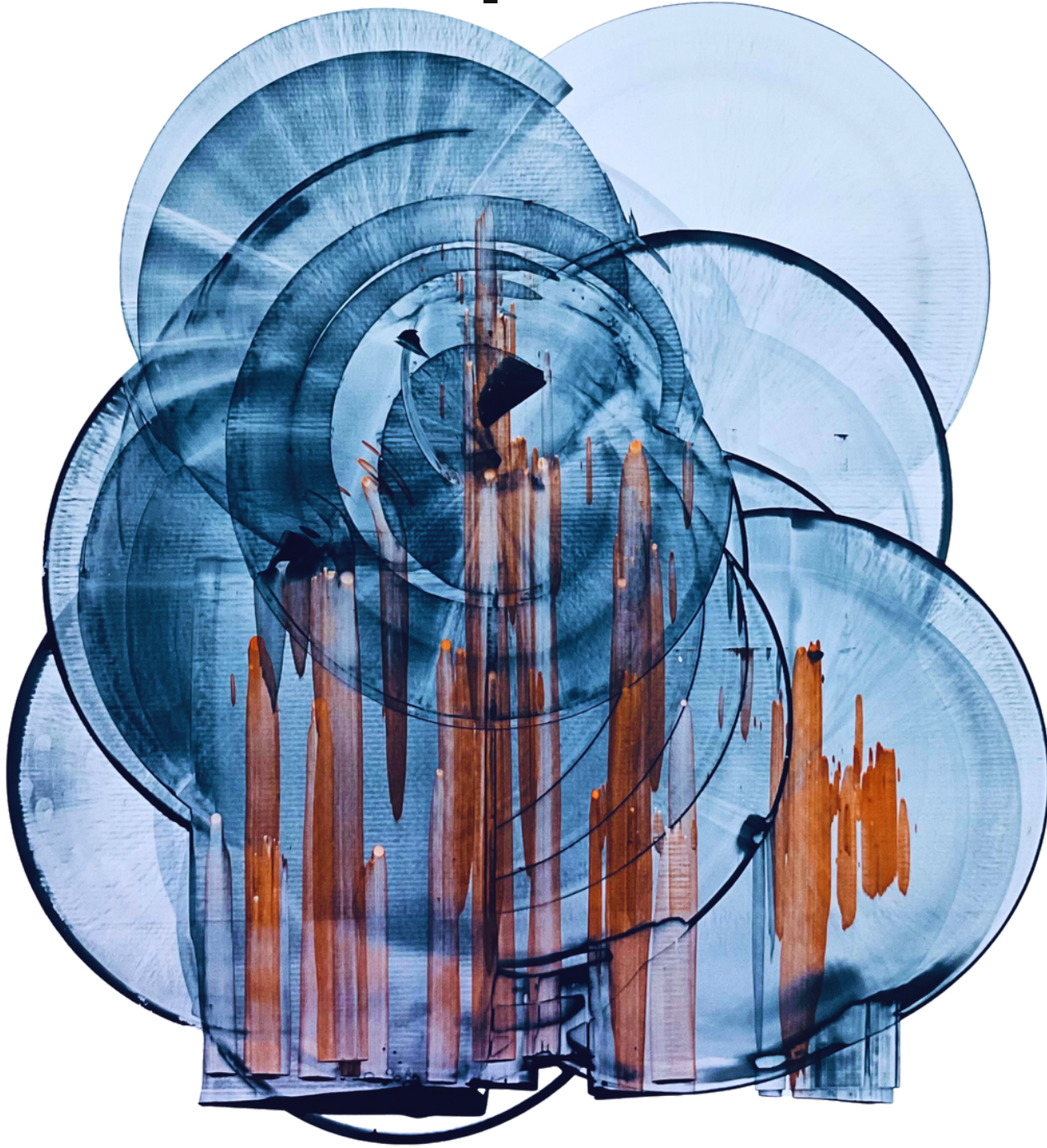
## ABOUT

An entire universe in ink; this work is heavily hand-embroidered using the same technique as my MRI artwork - but without expectations or boundaries.

34" x 28" alcohol ink and thread on Yupo paper  
\$2600



# KAONASHI | PERSIMMON



## ABOUT

With sweeping washes of handmade ink (from Jane Austen's own oak gall ink recipe); the rising figures in burning bush and rust reminded the artist of the kaonashi (顔無し, no-face) character from Studio Ghibli's film Spirited Away.

\*Kaonashi | Persimmon's companion piece, "Reunited" is available in my current collection at the Portland Art Museum Rental Sales Gallery.

32" x 34" artist-made ink on Yupo paper  
\$3600

# AUDIENCE | INDIGO



## ABOUT

Created alongside audience | opera pink, this work features layered continuous-line faces in sumi for a 3-D effect.

## DID YOU KNOW?

The color indigo symbolizes wisdom, personal thought, and profound insight. The translation of "ai-iro" means both indigo color and the "color of love".

The use of indigo in Japan dates back to the 1600's, primarily in textiles.

26" x 40" sumi, pastel and matte medium on Rives BFK  
S3200

# WHISPERS | NOREN



## ABOUT

These marks represent the face from the nose down (with three faces featured here), and are painted with closed eyes and later embellished in water-soluble wax pastel for texture.

I imagine these three in conversation, just beyond the deep green noren (a traditional Japanese curtain). Comprised of two 5"x7" paintings, whispers | noren is framed vertically.

8" x 16" sumi, caran d'ache neopastel aquarelle, acrylic on cotton paper  
S250

# EYES | INDIGO CHEEK



## ABOUT

Companion work to eyes | persimmon cheek.

24" x 18" sumi, caran d'ache neopastel aquarelle on cradled panel  
S850

# ARTIST'S MRI V



## ABOUT

Based on the artist's September 2023 MRI noting multiple sclerosis progression, and transformed into a bright and hopeful universe in ink-and-thread.

Translating an MRI in this way is meant to challenge perspective, and remove the clinical aspect of viewing medical imagery into something personal, hopeful, and reflective.

As of 2024, Lindsey has painted over 310 MRI of people living with multiple sclerosis, cancer, traumatic brain injury, and epilepsy. Many have chosen to share their stories of diagnosis through the #colorsofms project to spread awareness and to recognize the diversity of lived experiences.

It is estimated that over 1.8 million people have multiple sclerosis worldwide. MS affects function in cognitive, emotional, motor, sensory, or visual areas and occurs as a result of a person's immune system attacking their brain and spinal cord. There is not currently a cure.

To learn more, please visit the [nationalmssociety.org](https://www.nationalmssociety.org)

17" x 20" alcohol ink and thread on Yupo paper  
S550

# IKEBANA | SUMI



## ABOUT

An abstract imagining of an ikebana arrangement in sumi, created in a single fluid movement starting with a hojicha (roasted green tea) resist for a wood-like effect.

Ikebana | sumi is exhibited without a frame during CYCLES.

36" x 54" sumi, hojicha on Yupo paper  
S8500

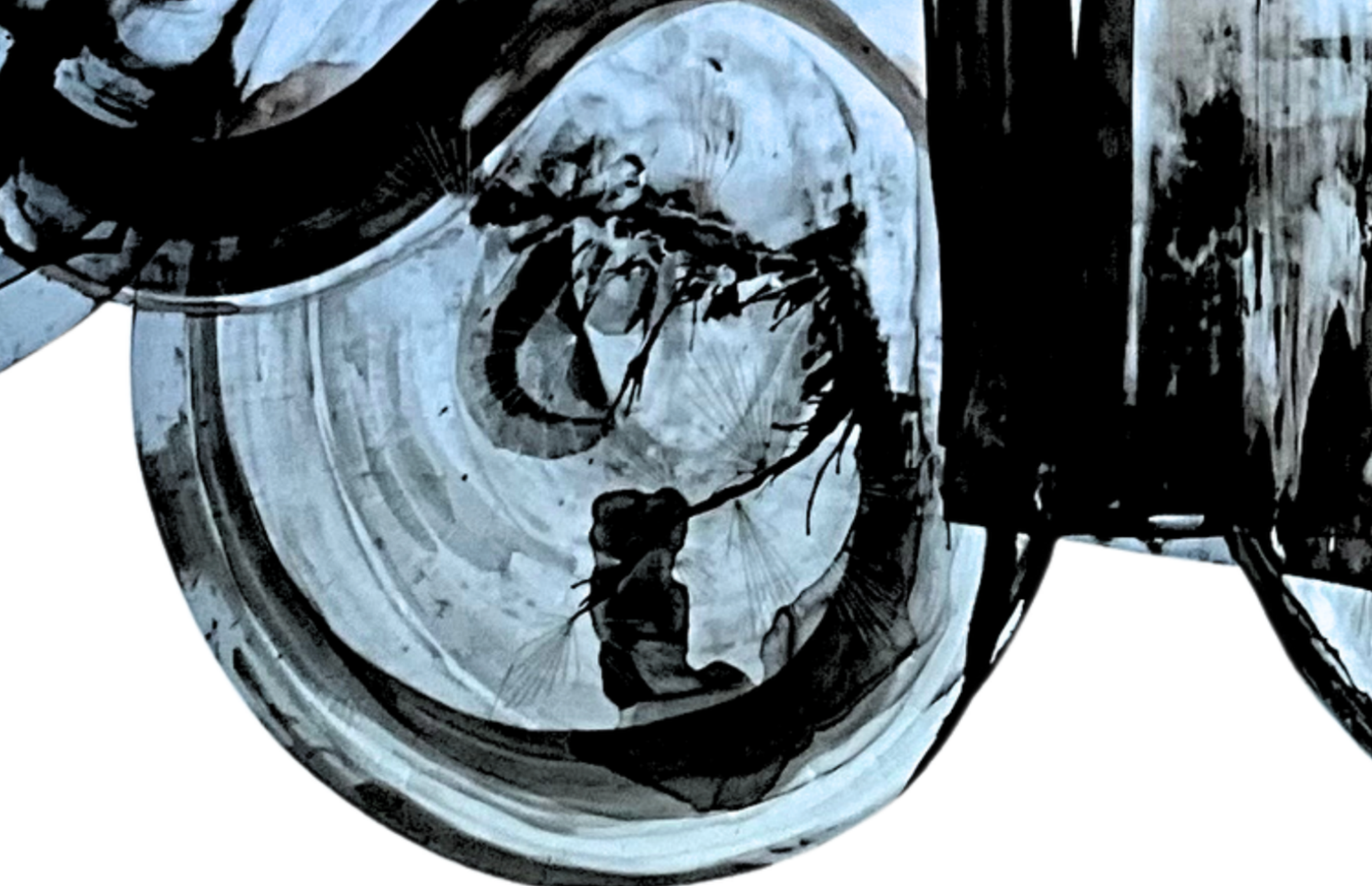
# COMFORT | MARCY'S GARDEN



## ABOUT

My mother is a master gardener, who has created a suburban haven over the years (as well as a certified backyard native bird habitat!). Her garden is one of the most peaceful places I know. Created with sumi over a hojicha (roasted green tea) resist, and hand embroidered.

38" x 36" sumi, hojicha, thread on Yupo paper  
\$5000



*thank you*

for additional information, please email [hello@lindseyjoyholcomb.com](mailto:hello@lindseyjoyholcomb.com)

for direct purchases from the Walters Cultural Arts Center 2/6 - 3/22  
(503) 615-3485; available for pick-up or shipping by April 1